

202 Silverscreen 2%

Openness factor 2%
Solar reflection 85%



Specification details

Openness factor	2%
Composition	64% PVC / 36% Glass, aluminium backing
Fabric width	max. 280 cm
Weight	400 g/m ²
Thickness	0.46 mm
IR emissivity metal side	0.03
Light fastness	Exterior 8 (ISO105-B02)
Fire tests	EN 13501-1 C-s3,d0, BS 5867 part 2 type B, NFP 92503 M1, NFPA 701, AS/NZS 1530.3 (0-0-0-4)
Environment	GreenGuard (LEED), GreenGuard Gold, REACH, RoHS2, HPD2.1, Formaldehyde free

Technical details

Colour	Optical properties acc. to EN 14500:2021 and EN 14501:2021					
	Rs (%)	Ts (%)	Tv (%)	Tuv (%)	Ra	Glare control rating
ED01 (031)	85	3	3	3	100	4 ¹
EC02 (022)	85	3	3	3	100	4 ¹
ED03 (033)	85	3	3	3	100	4 ¹
EB02 (012)	85	3	3	3	100	4 ¹
ED04 (034)	85	3	3	3	100	4 ¹
EB03 (013)	85	3	3	3	100	4 ¹
ED02 (032)	85	3	3	3	100	4 ¹
EB01 (011)	85	2	2	2	100	4 ¹

¹Cut off angle ≤65°, so upgrade with 1 class according to EN14501:2021.

Colour	Solar control double glazing G			Solar control triple glazing I		
	gtot/SHGC (%)	Utot-value (W/m ² K)	Tv, tot (%)	gtot/SHGC (%)	Utot-value (W/m ² K)	Tv, tot (%)
ED01 (031)	8	0.61	3	10	0.43	3
EC02 (022)	8	0.61	3	10	0.43	3
ED03 (033)	8	0.61	3	10	0.43	3
EB02 (012)	8	0.61	3	10	0.43	3
ED04 (034)	8	0.61	3	10	0.43	3
EB03 (013)	8	0.61	3	10	0.43	3
ED02 (032)	8	0.61	3	10	0.43	3
EB01 (011)	8	0.61	2	10	0.43	2

Rs: Solar reflection | **Ts:** Solar transmission | **As:** Solar absorption calculation: 100 - Rs - Ts = As

Tv: Visual light transmission | **Tuv:** UV transmission | **Ra:** Colour rendering index

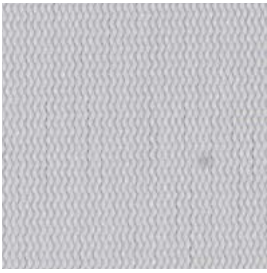
Glazing G: g=33% / U=1.0 / Tv=70% (acc. to EN14501: 2021) | **Glazing I:** g=31% / U=0.6 / Tv=64% (with ref. panes acc. to EN 14501:2021)

gtot/SHGC: Solar heat gain through total fenestration | **Utot:** Thermal heat loss (or gain) through total fenestration

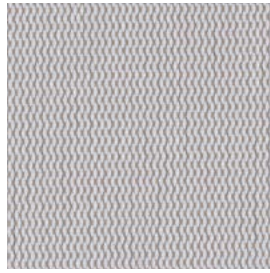
Tv, tot: Total light transmission through total fenestration

These are approximate values. Individual results may vary slightly. The technical data are based on average data and are subject to production tolerances. Subject to misprints, errors and technical modifications.

202 Silverscreen 2%



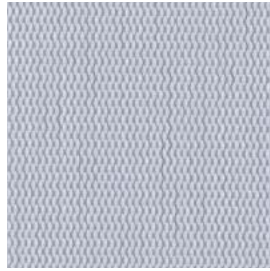
Beige
ED02 (032)



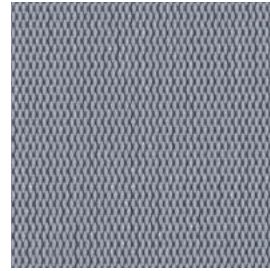
Dark Beige
ED04 (034)



Bronze
EB03 (013)



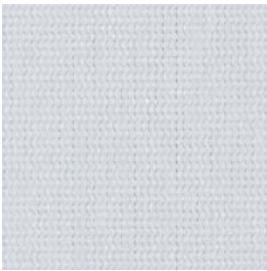
Light Grey
ED03 (033)



Steel Grey
EC02 (022)



Dark Grey
EB02 (012)



White
ED01 (031)



Black
EB01 (011)

