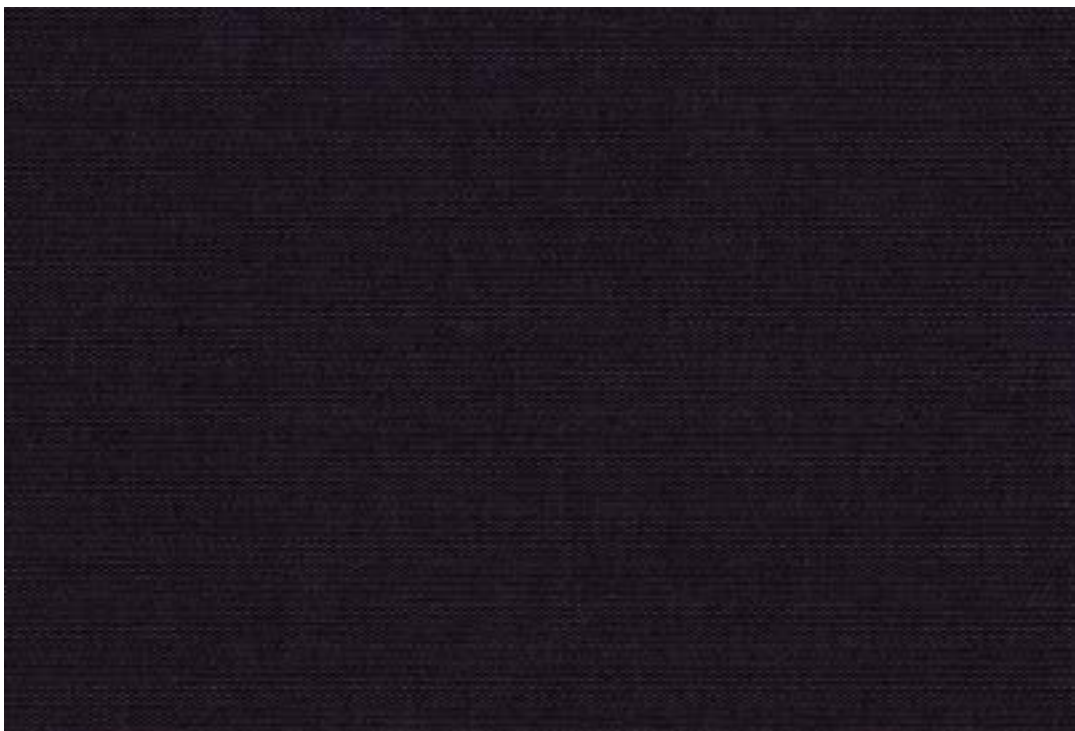


Apo Ronan and Erwan Bouroullec

Openness factor 2%
Solar reflection 64%
Acoustic performance 0.40 aw / Class D
Excellent glare control



kvadrat shade

Specification details

Openness factor	2%
Composition	100% Trevira CS, aluminium backing
Fabric width	235 cm (92.5 inches)
Weight	210 g/m ²
Thickness	0.40 mm
IR emissivity metal side	0.32
Light fastness	Interior 4-7, Exterior 7 (ISO105-B02)
Fire tests	EN 13501-1 (B-s1, d0), BS 5867 part 2 type B, DIN 4102 B1, NFPA 701, GB 8624 B1, GB 50222 B1, JIS L 1091 A-1 D, EN 13773 class 1
Environment	Cradle to Cradle (C2C) Bronze, GREENGUARD Gold, STANDARD 100 Class IV by OEKO-TEX®, Environmental Product Declaration (EPD), Health Product Declaration (HPD). Comply with REACH and RoHS. Free of intentionally added antimony and PFAS. Halogen free, Phthalate free, Formaldehyde free, Antimicrobials free, PVC free.
Sound absorption	0.40 α_w / Class D

Technical details

Colour	Optical properties acc. to EN 14500:2021 and EN 14501:2021					
	Rs (%)	Ts (%)	Tv (%)	Tuv (%)	Ra	Glare control rating
101	64	6	6	6	100	3
131	64	5	4	4	98	4
161	64	5	4	4	98	4
191	64	5	4	4	98	4
201	64	6	5	5	98	4
431	64	5	5	4	91	4
601	64	5	5	5	98	4
701	64	6	6	5	97	3

Colour	Solar control double glazing G			Solar control triple glazing I		
	gtot/SHGC (%)	Utot-value (W/m ² K)	Tv, tot (%)	gtot/SHGC (%)	Utot-value (W/m ² K)	Tv, tot (%)
101	15	0.76	5	16	0.51	5
131	15	0.76	4	16	0.51	4
161	15	0.76	3	16	0.51	3
191	15	0.76	3	16	0.51	3
201	15	0.76	4	16	0.51	4
431	15	0.76	4	16	0.51	4
601	15	0.76	4	16	0.51	4
701	15	0.76	5	16	0.51	4

Rs: Solar reflection | **Ts:** Solar transmission | **As:** Solar absorption calculation: $100 - R_s - T_s = A_s$

Tv: Visual light transmission | **Tuv:** UV transmission | **Ra:** Colour rendering index

Glazing G: $g=33\%$ / $U=1.0$ / $Tv=70\%$ (acc. to EN14501: 2021) | **Glazing I:** $g=31\%$ / $U=0.6$ / $Tv=64\%$ (with ref. panes acc. to EN 14501:2021)

gtot/SHGC: Solar heat gain through total fenestration | **Utot:** Thermal heat loss (or gain) through total fenestration

Tv, tot: Total light transmission through total fenestration

Apo



431



101



131



201



601



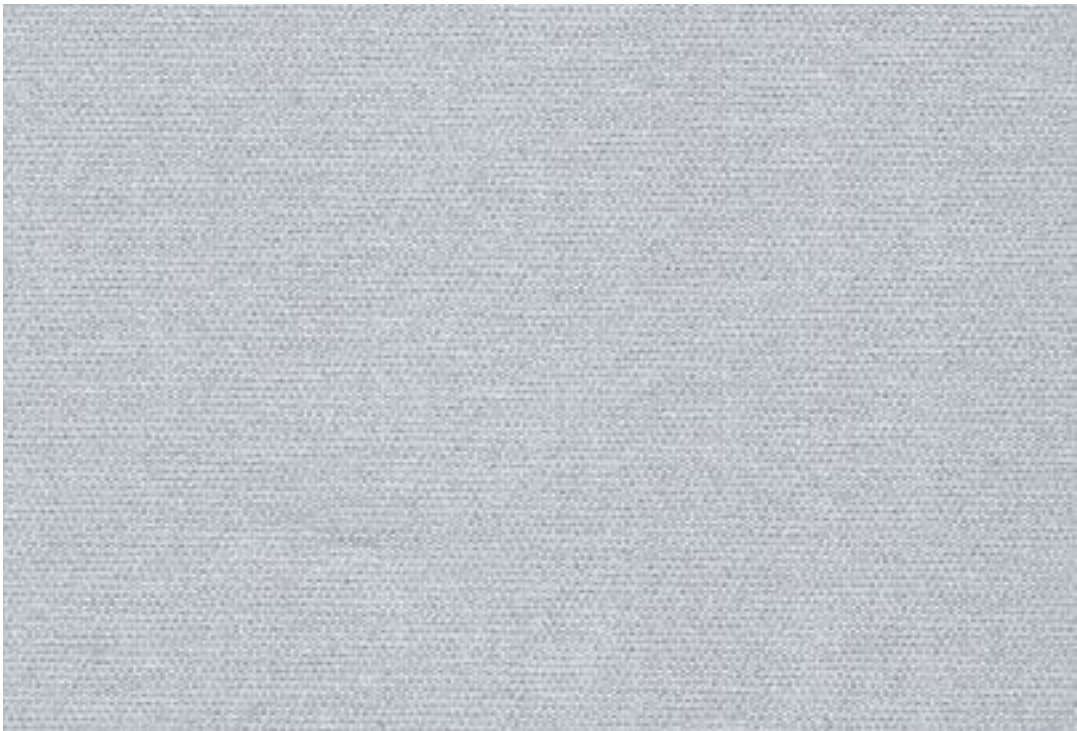
161



701



191



Apo

Design: Ronan & Erwan Bouroullec

DK

Anvendelse Rullegardin.

Beskrivelse 100% Trevira CS. Alubelægning. Bredde 235 cm. Vægt 210 g/m². Tykkelse 0.40 mm. Transfer tryk. Nuanceforskelle kan forekomme.

Lysægted Interiør 4-7, Udvendt 7 (ISO 105-B02).

Flammesikring EN 13501-1 (B-s1, d0), BS 5867 part 2 type B, DIN 4102 B1, NFPA 701, GB 8624 B1, GB 50222 B1, JIS L 1091 A-1 D, EN 13773 class 1 (Kopi af testrapport kan rekvireres).

Vedligeholdelse Se ISO symboler. Kan børstes eller støvsuges (laveste sugkraft) med børstemundstykke. Ved kraftigere tilsmudsning anbefales det at kontakte et professionelt renseri.

UK

Application Roller blind.

Description 100% Trevira CS. Aluminium backing. Width 235 cm (92.5 inches). Weight 210 g/m². Thickness 0.40 mm. Transfer print. Colour differences may occur.

Lightfastness Interior 4-7, Exterior 7 (ISO 105-B02).

Flame resistance EN 13501-1 (B-s1, d0), BS 5867 part 2 type B, DIN 4102 B1, NFPA 701, GB 8624 B1, GB 50222 B1, JIS L 1091 A-1 D, EN 13773 class 1 (Copy of test report available).

Care See ISO symbols. Can be brushed or carefully vacuumed (lowest suction power) with a brush nozzle. In case of considerable staining, we recommend contacting a professional dry cleaner.

DE

Anwendungsbereich Rollos.

Beschreibung 100% Trevira CS. Alubedampft. Breite 235 cm. Gewicht 210 g/m². Dicke 0.40 mm. Transferdruck. Farbunterschiede können vorkommen.

Lichtechtheit Innen 4-7. Äußeres 7 (ISO 105-B02).

Flammschutz EN 13501-1 (B-s1, d0), BS 5867 part 2 type B, DIN 4102 B1, NFPA 701, GB 8624 B1, GB 50222 B1, JIS L 1091 A-1 D, EN 13773 class 1 (Testbericht verfügbar).

Pflege Siehe ISO Pflegesymbole. Reinigung durch vorsichtiges Abbürsten oder saugen mit Bürstenaufsatz und niedrigste Saugleistung möglich. Bei starker Verschmutzung empfehlen wir einen professionellen Reinigungsdienst.

NL

Toepassing Rolgordijn.

Omschrijving 100% Trevira CS. Aluminium backing. Breedte 235 cm. Gewicht 210 g/m². Dikte 0.40 mm. Transfer print.

Kleurverschillen kunnen optreden.

Lichtechtheid Interieur 4-7. Extérieur 7 (ISO 105-B02).

Brandwerendheid EN 13501-1 (B-s1, d0), BS 5867 part 2 type B, DIN 4102 B1, NFPA 701, GB 8624 B1, GB 50222 B1, JIS L 1091 A-1 D, EN 13773 class 1 (Op aanvraag sturen wij u graag een kopie van het testrapport toe).

Onderhoud Kan schoongemaakt worden door middel van een borstel of een stofzuiger met borstelstuk op laagste zuigkracht. In het geval van serieuze vlekvorming, raden we aan contact op te nemen met een professionele reiniger.

FR

Domaine d'utilisation Store.

Description 100% Trevira CS. Enduit aluminium. Largeur 235 cm. Poids 210 g/m². Épaisseur 0.40 mm. Impression par transfert. Ecarts des coloris possibles.

Résistance à la lumière Intérieur 4-7. Extérieur 7 (ISO 105-B02).

Normes au feu EN 13501-1 (B-s1, d0), BS 5867 part 2 type B, DIN 4102 B1, NFPA 701, GB 8624 B1, GB 50222 B1, JIS L 1091 A-1 D, EN 13773 class 1 (La copie du compte rendu des tests est disponible sur demande).

Entretien Voir les symboles ISO. Le tissu peut être brossé ou aspiré avec soin (puissance d'aspiration minimale) avec un embout en forme de brosse. Dans le cas où le tissu a été fortement taché, nous suggérons de contacter un pressing professionnel.

IT

Destinazione d'uso Tende a rullo.

Caratteristiche 100% Trevira CS. Rifinito sul retro con alu. Altezza 235 cm. Peso 210 g/m². Spessore 0.40 mm. Transfer print. Possibili differenze per colore.

Resistenza alla luce Interno 4-7. Esterno 7 (ISO 105-B02).

Ignifugazione EN 13501-1 (B-s1, d0), BS 5867 part 2 type B, DIN 4102 B1, NFPA 701, GB 8624 B1, GB 50222 B1, JIS L 1091 A-1 D, EN 13773 class 1 (Disponibile copia del test).

Manutenzione Per favore seguire simboli ISO. Può essere spazzolato oppure accuratamente aspirato (potenza di aspirazione minima) con un ugello a spazzola. In caso di macchie considerevoli, si consiglia di contattare un lavasecco professionale.

ES

Aplicación Estor.

Descripción 100% Trevira CS. Reverso de aluminio. Anchura 235 cm. Peso 210 g/m². Grosor 0.40 mm. Impresión digital textil. Posibles variaciones de color.

Resistencia a la luz Interior 4-7. Exterior 7 (ISO 105-B02).

Resistencia al fuego EN 13501-1 (B-s1, d0), BS 5867 part 2 type B, DIN 4102 B1, NFPA 701, GB 8624 B1, GB 50222 B1, JIS L 1091 A-1 D, EN 13773 class 1 (Copia del informe de ensayos disponible).

Limpieza Consulte los símbolos ISO. Limpiar con un paño seco o ligeramente humedecido. **Limpieza** Consulte los símbolos ISO. Se puede cepillar o aspirar con cuidado (potencia de succión más baja) con una boquilla de cepillo. En caso de manchas considerables, recomendamos contactar con un profesional de limpieza.

SE

Användning Rullgardin.

Beskrivning 100% Trevira CS. Aluminiumsbaksida. Bredd 235 cm. Vikt 210 g/m². Tjocklek 0.40 mm. Transfertryck. Viss nyansskillnad kan förekomma.

Ljushärdighet Interiör 4-7. Exteriör 7 (ISO 105-B02).

Flammskydd EN 13501-1 (B-s1, d0), BS 5867 part 2 type B, DIN 4102 B1, NFPA 701, GB 8624 B1, GB 50222 B1, JIS L 1091 A-1 D, EN 13773 class 1 (Kopia av testrapport finns tillgänglig vid förfrågan).

Underhåll Se ISO symboler. Kan borstas eller dammsugas försiktigt (lägsta sugkraft) med ett borstmundstykke. I händelse av fläckar rekommenderar vi att du lämnar in rullgardinen till kemtvätt.

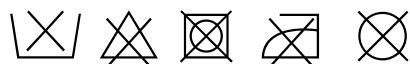
ZH

产品应用 遮光卷帘。

产品详情 100% 德国阻燃丝。铝涂层背膜。幅宽：235厘米。克重：210克/平方米。厚度：0.40毫米。转印。可能出现色差。

日晒色牢度 内层：4-7，外层：7 (ISO 105-B02)。阻燃级别 欧洲标准EN 13501-1 (B-s1, d0)，英国标准BS 5867 第2部分B级，德国标准DIN 4102 B1，美国标准NFPA 701，中国标准GB 8624 B1，欧洲标准EN 13773 1级，中国标准GB 50222 B1，日本标准JIS L 1091 A-1 D。(可提供检测报告副本)。

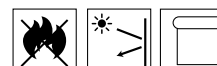
保养须知 请参照ISO标识。可用软毛刷或配备软毛刷吸头的吸尘器(最低吸力档位)进行清洁。如脏污较严重，建议联系专业干洗服务。



Contact and further information kvadrat.dk



STANDARD
100
15.HNL.57853
Hohenstein



5 year
warranty

Apo

Apo by Ronan and Erwan Bouroullec has an elegant woven look and an aluminium backing. Slightly transparent, it provides a unique combination of visual comfort, thermal comfort and acoustic comfort. The good acoustic performance with 40% sound absorption is exceptional for a roller blind textile. Colours range from dark and light neutrals to colourful gold, green and blue hues.

Ronan and Erwan Bouroullec

Ronan and Erwan Bouroullec are two of the most influential designers in the world today. Trained in modern art and design, originally, they come from a town near Rennes in Brittany, France. Their diverse output spans furniture, product design, interior design and the development of conceptual objects.